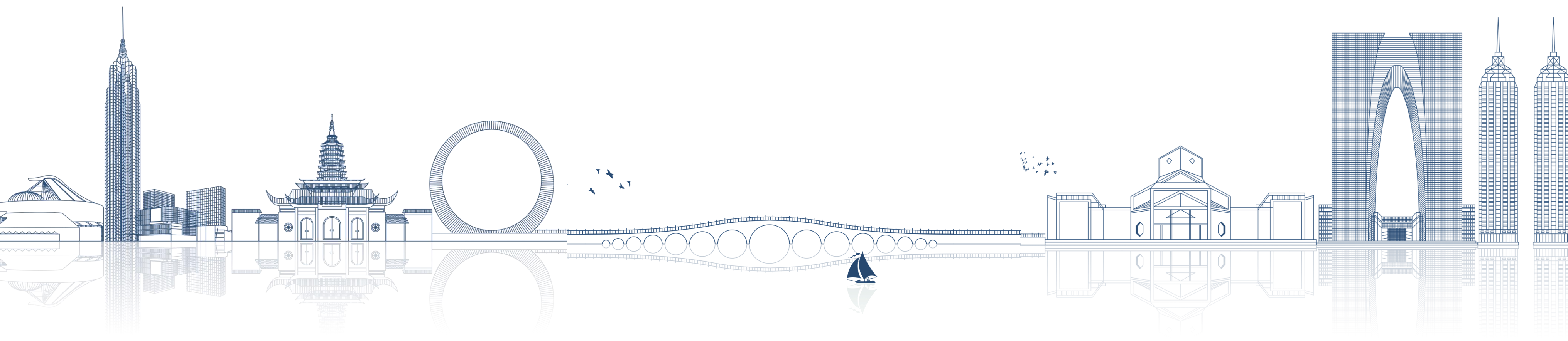




Ship & Shore Environmental Engineering (Suzhou) Co., Ltd.



COMPANY INTRODUCTION ■ ■ ■ ■



Contents

01

**Company
Profile**

02

**Management
Team**

03

**Products
Lineup**

04

**Our
Clients**



Company Profile



Suzhou China Headquarters



JOINT
VENTURE



UNIVERSITY-ENTERPRISE
COOPERATION



ENGINEERING
EXPERIENCE

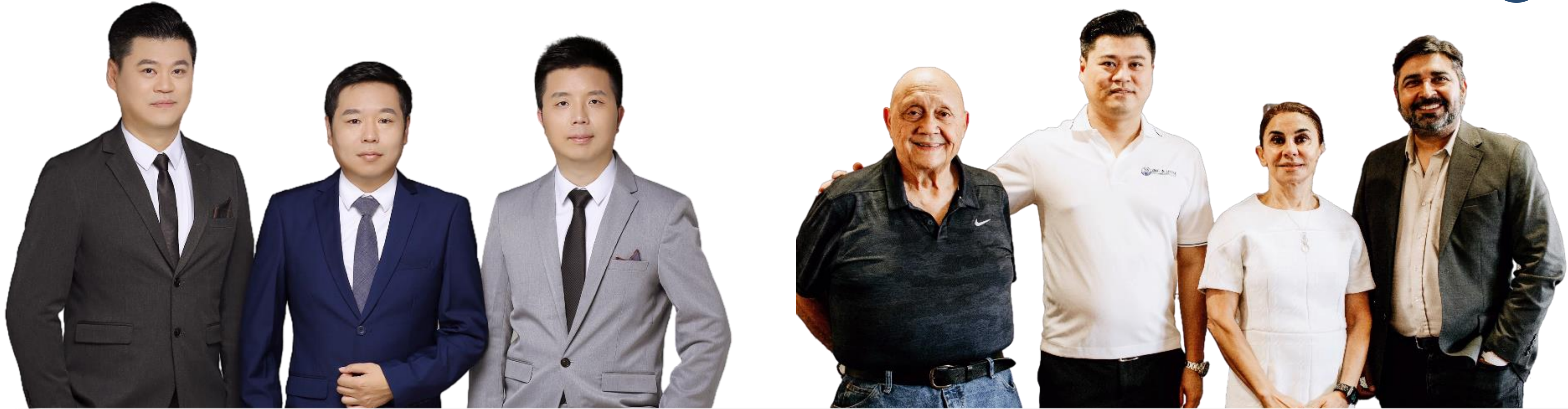


REGENERATIVE THERMAL
OXIDIZER SYSTEM

Ship & Shore Environmental Engineering (Suzhou) Co., Ltd. is a comprehensive environmental engineering company that offers environmental services, engineering design, equipment fabrication, installation & commissioning and operation & maintenance for various industry.

Primary Products and Services:

1. **Waste Gas Treatment** (RTO – Chemical Scrubbers – Activated Carbon and etc.)
2. **Dust Collector** (ADC – BDC – CDC – MDC and etc.)
3. **Industrial Filter Cartridge** (Flame Retardant Nanofiber – Flame Retardant with anti-static Nanofiber and etc.)



CTO

Joon Lai

CEO

Leo Zhang

DGM

Glor Chen

CTO

John Von
Bargen

CTO - Asia

Joon Lai

CEO

Anoosheh
Oskouian

COO

Anu D. Vij



Suzhou, China

Management Team



CA, United States



Company History



1. The company provides **OEM** abatement equipment to well-known environmental companies.
2. Formed a strategic partnership with **Jiangsu University of Science and Technology**

Comprehensive environmental equipment solutions were offered to well-known local state-owned enterprises and international clients.

Ship & Shore Environmental Engineering (Suzhou) Co., Ltd. was established by partnered with **Ship and Shore Environmental Inc., USA.**

Through this collaboration, advanced and proven **RTO (Regenerative Thermal Oxidizer)** technology from overseas was introduced and transferred to China company.





Company History



Continuously updating...

Integration of **oversea RTO** (Regenerative Thermal Oxidizer) technology & experience with local standards to provide high-quality & superior RTO system to a wide range of enterprises.

2020

We have gained recognition from multiple well-known international companies and have secured contracts for environmental turnkey projects worth over **20 million RMB** in total.

2021

We secured an environmental engineering EPC (Engineering, Procurement, and Construction) contract from **a Fortune 500 multinational company**. Within the year, we smoothly executed and completed the project, leading to a successful hang over of the project.

2022



Company Certificates



Production Safety License



Letter of Recognition from
our Business Partner



Quality Management
System Certificate



Products Patent Certificates



**Dust Reduction Zeolite
Absorption Rotor Equipment**



**Four-Nozzle Jet Pulse
Dust Collector**



**Special Valve System for
RTO Equipment**





Product For Industrial Waste Gases

SMART 3-Canister



Economy
Modular Design
Efficiency



Finite Element Analysis
Equipment Safety
Low NOx Burner Module
Smart Control



■■■■ Product For Industrial Waste Gases



Regenerative Thermal Oxidizer

The RTO meet the most stringent air pollution abatement regulations by using state-of-art engineering to repurpose the thermal energy created during operation, resulting in lower costs and less energy consumption. It could recover the heat **as high as 95-97%** while achieving Destruction rate of **more than 99%**. It's also suitable for wide range of VOCs solvent mixtures and exhaust volumes up to 25% LEL.

Activated Carbon Adsorption System

It's a non-destructive control technology employed to remove VOCs from low to medium concentration gas stream. It is the most **cost-effective**, simple, and convenient.



Catalytic Oxidizer

Catalytic Oxidizer (CO) uses a catalyst to promote the oxidation of **VOCs to CO₂ and water**. The catalyst therefore allows oxidation to occur at lower temperatures than for thermal oxidation. It generally uses in simple not mixing of many VOCs and lower VOCs concentration condition. **It operates between 340°C to 500°C and can achieve high destruction rate efficiency.**

Chemicals Scrubber

This method is most suitable for **waste gas that are soluble in water, acid or alkaline liquid**. It also **has partial dust removal capability**





Fortune 500 Global Enterprise



HEMPEL - Paint Manufacturing Industry

01

Danish Enterprise

Established in 1915, currently with 26 production plants, 17 Research and Development centers, and over 7,500 employees in more than 100 countries and regions worldwide.

02

Production VOCs Waste Gases And Dust Collectors

Capacity: 80,000 NCMH x 2 **Pollutants:** Toluene and Paint VOCs

Process System: Ducting Collection System, Dust Collectors, Activated Carbon System and SMART 3-Can RTOs.

03

Fruitful Cooperation

After a 4-month trial operation, the HEMPEL factory's **Regenerative Thermal Oxidizer waste gas treatment system and Dust Collection system** have successfully passed all the acceptance tests. **The entire system is now in operation.**



Fortune 500 Global Enterprise



DOOSAN - Copper Clad Laminate

Step One

»» Korean Enterprise

Established in 1896, with a development history spanning 109 years to date. Engaged in various industries, including heavy industry, services, consumer goods, and more. **Its formidable strength has positioned it as a leader in different sectors, boasting world-class quality and technological services.**

Step Two

»» VOCs Waste Gas Treatment System

Capacity: 30,000 NCMH Concentrator with 31,000 NCMH RTO

Pollutants: Acetone, Aromatic Compounds and Epoxy Resin

Process System: Sophisticated multi stages Filter System, Zeolite Concentrator Wheel, SMART 3-Can RTO and Waste Heat Recovery (Hot Oil + Hot Water).

Step Three

»» Environmental Assistance for Industry

Secured the general contracting environmental engineering project **and successfully executed and completed the entire project within the year. The project has been officially accepted, in operation and achieve 99.7% of DRE.**



Professional Dust Collectors

Customize on Demand

Modular Design and Transportation Convenience

The product adopts a modular, multiple types of filter elements and interchangeable design catering to customize requirements.

Detailed Parameters for easy understanding

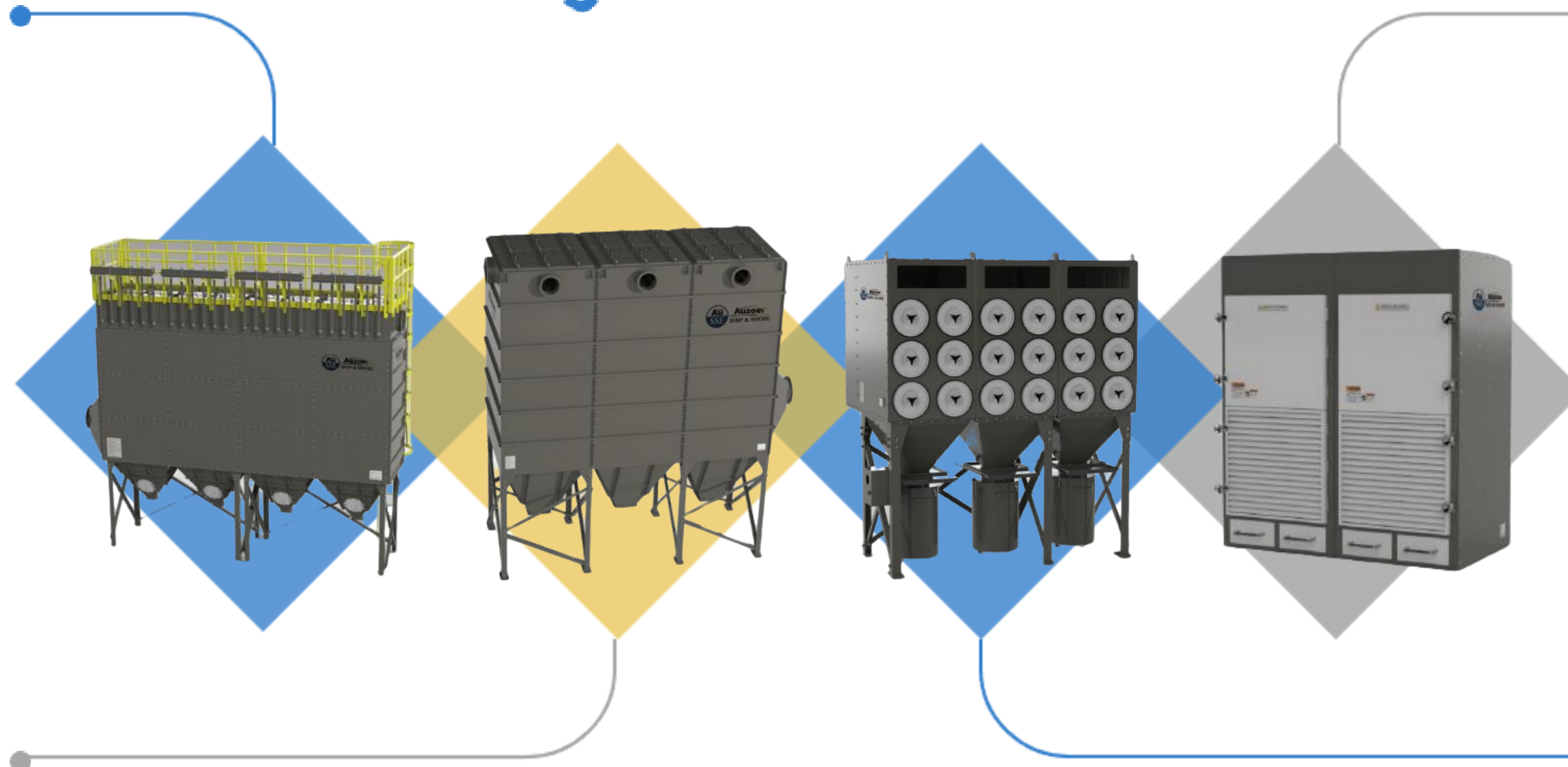
Provide comprehensive parameters including model, processing air volume, filtering area, number of bags, and external dimensions.

Time Saving Easy Assembly and installation

Free assembly, efficient and precise installation, shortened installation time, convenient replacement of damaged components and easy maintenance.

Depending on the industrial condition and choose according to the needs

Customers provide information on working conditions, and we offer professional answers, providing a one-stop solution to the dust collectors problem.





Product For Dust



Powder Engineering Professional Equipment

MANUAL UNPACKING STATION



Bag specification cati ons: 0.5-25 kg/ bag
Equipment Material Options: Q235, 201, 304, 316L
Dust Removal Method: Pulse Blowing
Air Source Pressure: 0.6 Mpa
Fan Power:1.5kW

WAREHOUSE TOP DUST COLLECTOR



Equipment Material Options: Q235, 201, 304, 316L
Dust Removal Method: Pulse Blowing
Air Source Pressure: 0.6 Mpa
Filtration Area: 30m' (can be designed according to customer's actual requirements)

WAREHOUSE TOP DUST COLLECTOR + SMALL SILO COMBINATION



Air Volume: 250 m³/h
Equipment Material Options: Q235, 201, 304, 316L
Dust Removal Method: Pulse Blowing
Vacuum: 220 mBar
Vortex Air Pump: 5.5 kW
Filtration Area: 2.2 m² (Can be designed according to customer's actual requirements)

VACUUM FEEDER



DUST-FREE FEEDING STATION



Volume :3 m³
Equipment Material Options: Q235, 201, 304, 316L
Dust Removal Fan Power :1.5kW
Filtration Area 7 m²



Sand-blasting and Dust Collectors System

01



Project Data

Capacity: 30,000 NCMH

Pollutant : Shot blasting and sand blasting dust

Process System: Cyclone Dust Collector + Cartridge Dust Collector

02



Professional Services

According to different industry conditions and actual situation, provide professional solutions for industrial enterprises.



Dust Collectors in Production Plant

Step One

» Project Data

Capacity: 30,000 NCMH

Pollutants: Plastic Dust

Process System: Fabric Dust Collector

Step Two

» Comprehensive Aftermarket Service

Even after completion of project and whenever there is issue arising during operation, our expert team are always available to provide you the solutions.



Dust Collectors in Production Plant

Step One

» Project Data

Capacity: 2,000 NCMH

Pollutants: Lithium Battery Cathode and Anode Materials

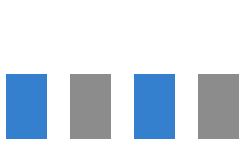
Process System: Filter Cartridge Dust Collector

Step Two

» Comprehensive Aftermarket Service

Contact us from Official Webpage, Official WeChat Account,
Phone and other Media Channels.





Product – Industrial Filter Cartridge



AuSSE Industrial Filter Cartridge



Automated
Production



Industrial-Grade
Material



Each Individual
Inspection



Value of
Money



Highly
Compatibility



Comprehensive
Aftermarket Service



Cellulose



Polyester



Flame Retardant
Nanofiber with Antistatic



Flame Retardant
Nanofiber



Polyester with
PTFE Membrane



Product Advantages



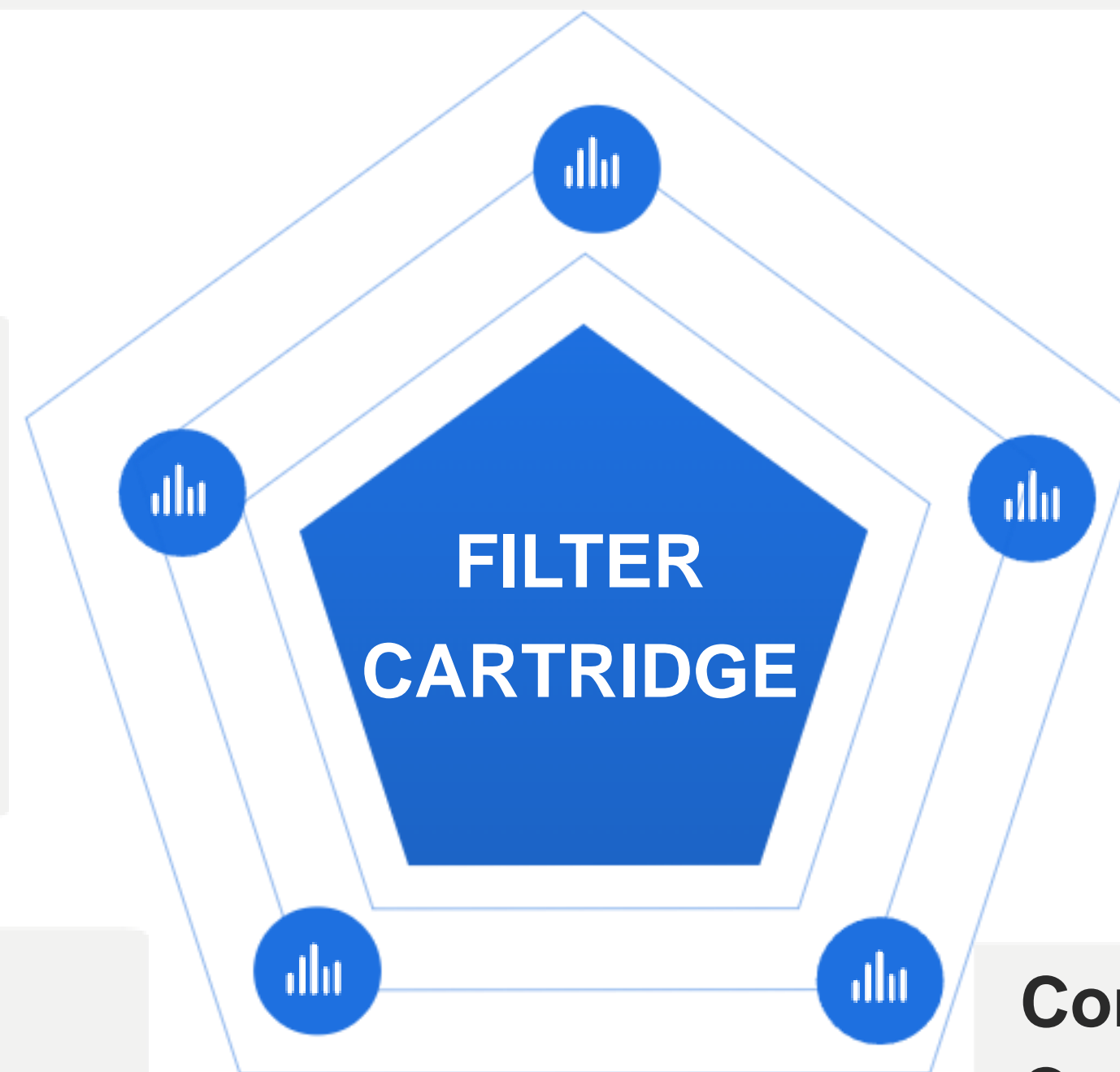
Industrial-Grade Material with Quality Assurance

Not only considering performance but also focusing on quality. Choose with confidence for efficient industrial dust filter cartridge.



Ready in Stock Fast Delivery

Compatible with multiple models, easy replacement, **Such as Donaldson, Nederman, Camfil and other dust filter cartridge.**



Automated Production

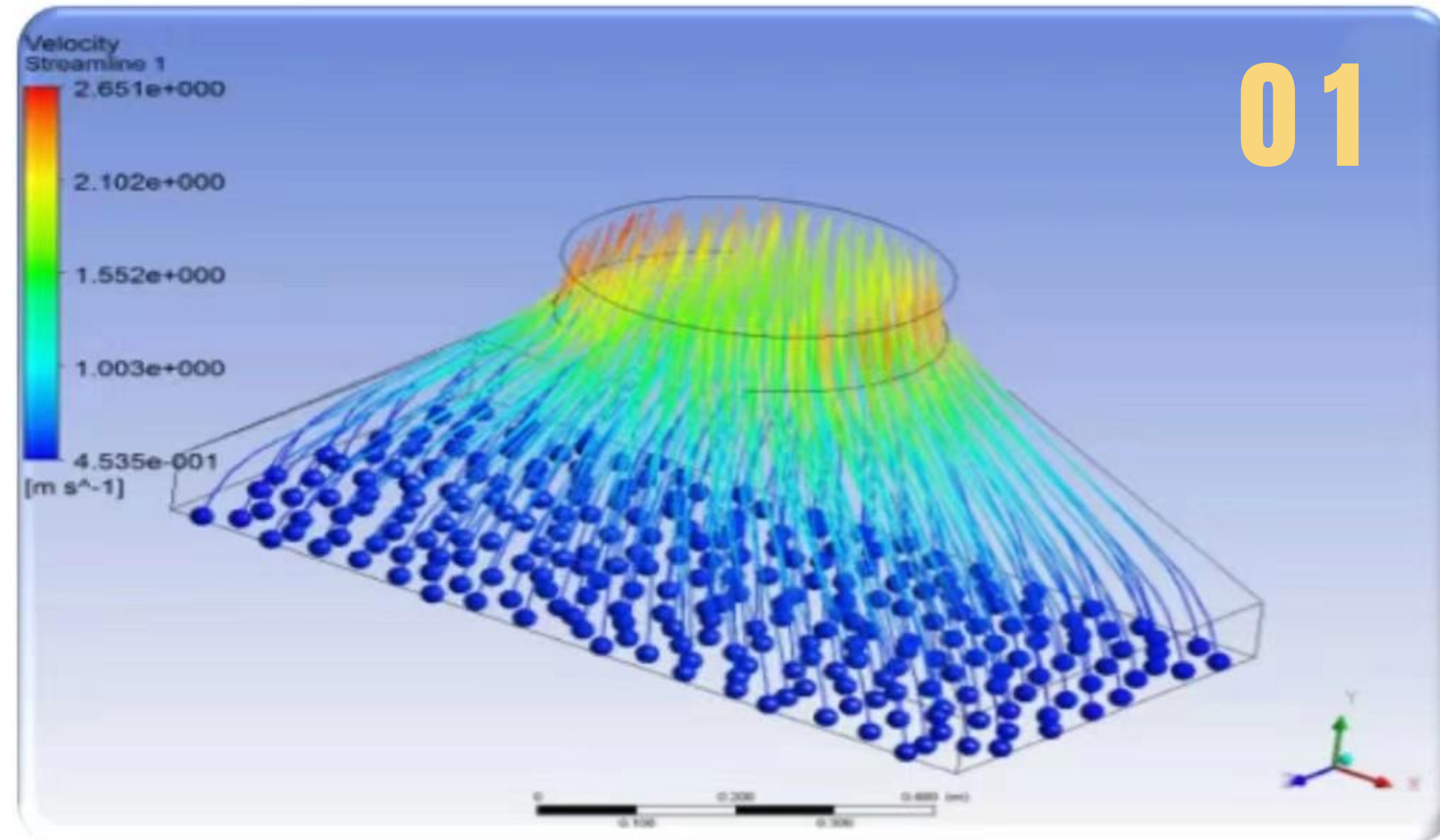
Facing large-scale, bulk filter cartridge demands. You can inquire by phone, make reservations in advance, and we will deliver on time.

Value of Money Filter Cartridges

For different types of products, we provide competitive pricing structures, achieving filter cartridge efficiency and cost-effectiveness.

Consultative Purchasing with Comprehensive Aftermarket Service

Based on industrial conditions and dust filter cartridge needs, provide corresponding dust filter cartridge solutions and products. Consult customer service, one-click purchase, post-purchase tracking service and enjoy convenient delivery.



Suction Hood Airflow Simulation



By simulating airflow, predicts the flow trajectory when air is drawn in through a specific-shaped hood at a certain air volume. **This provides a basis for waste gas collection methods and their effectiveness**

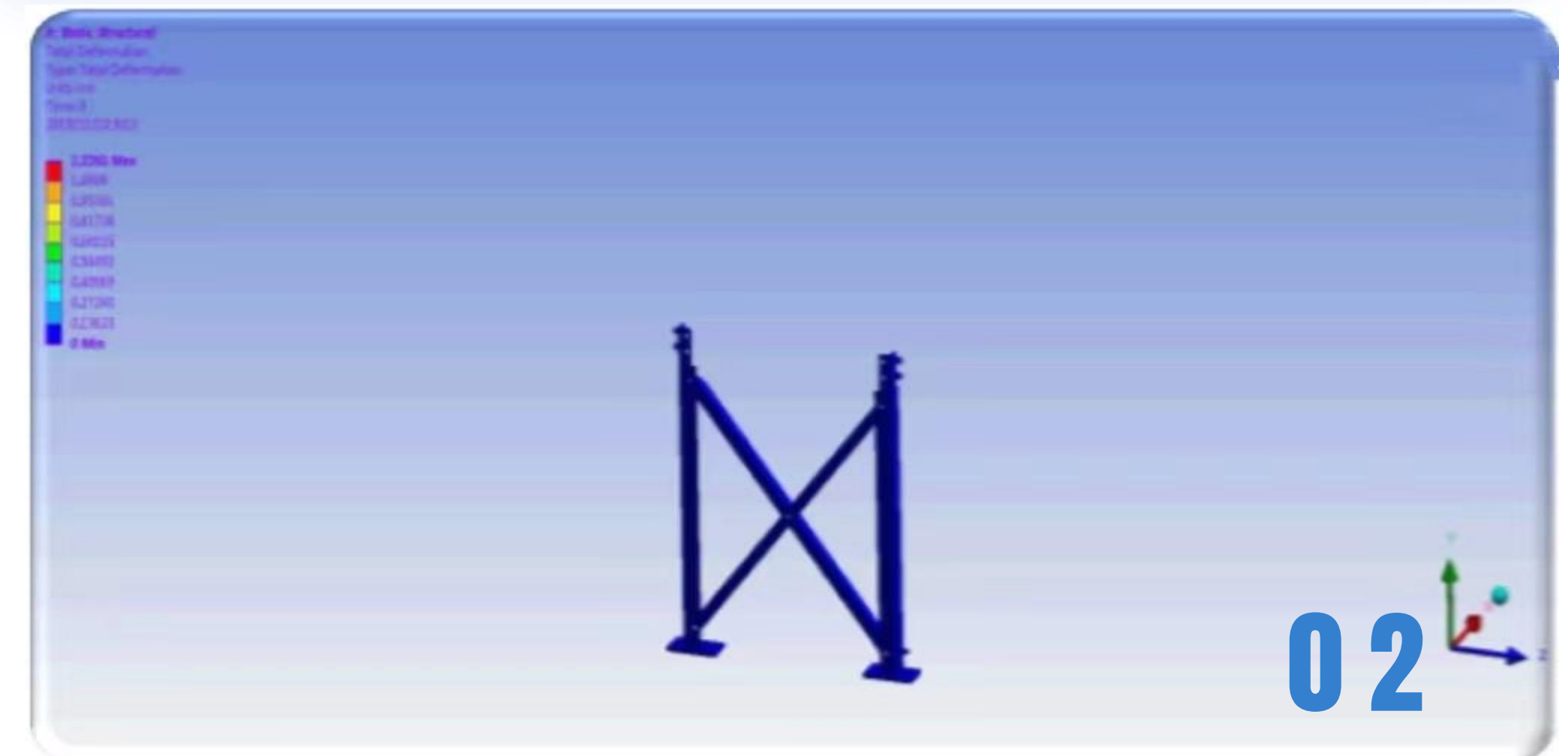
01

Structure Support Strength Analysis



Conducting mechanical simulation analysis on the supporting structure under certain loads to verify the rationality of strength design, **thereby enhancing the safety and stability of the system.**

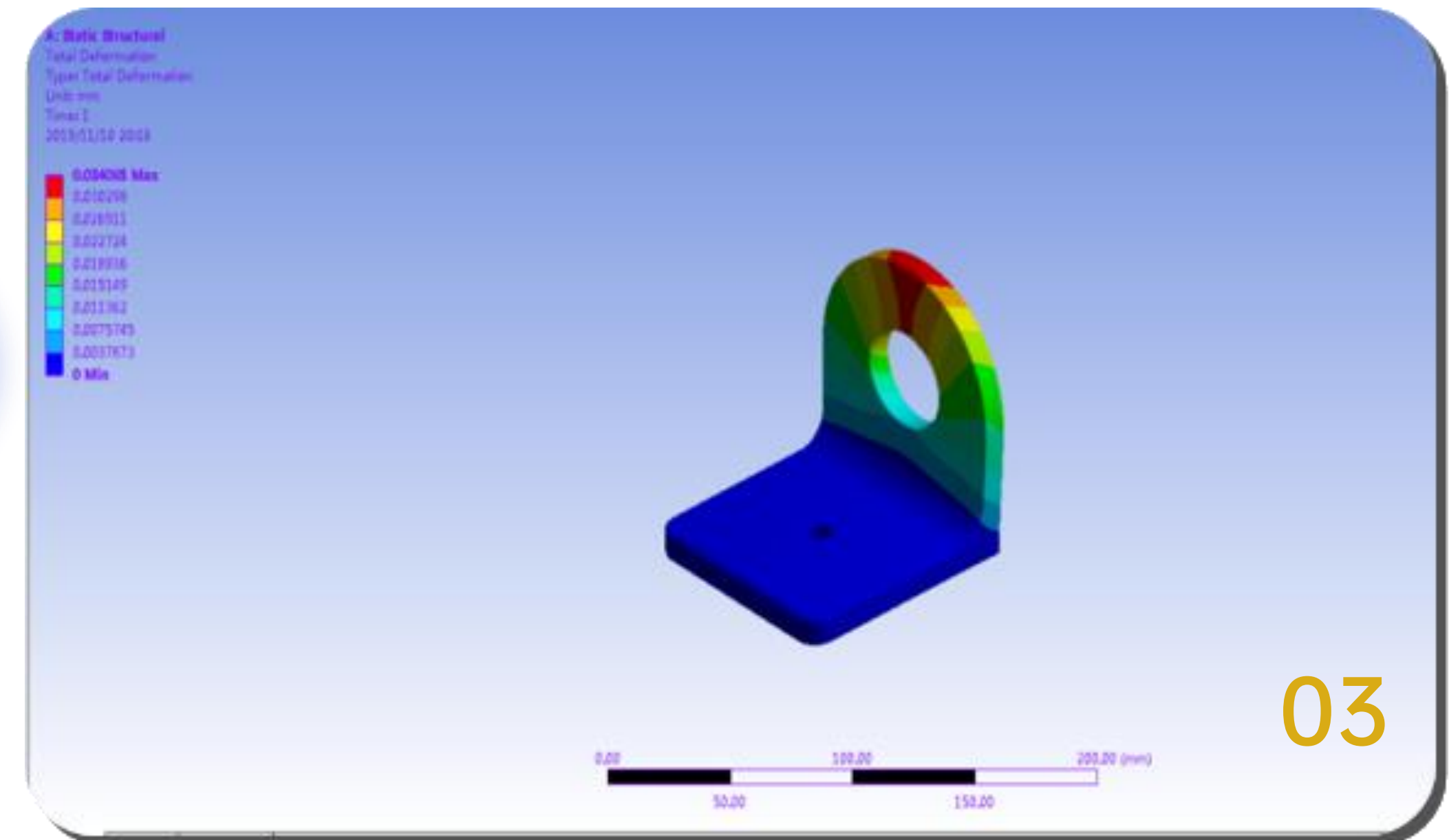
02



Strength Analysis of Lifting Lug

Through the strength simulation analysis of lifting lug, ensuring that the design parameters and installation position of the lifting lug can meet the lifting load of heavy equipment, thereby enhancing the safety during the equipment manufacturing and installation phase

03

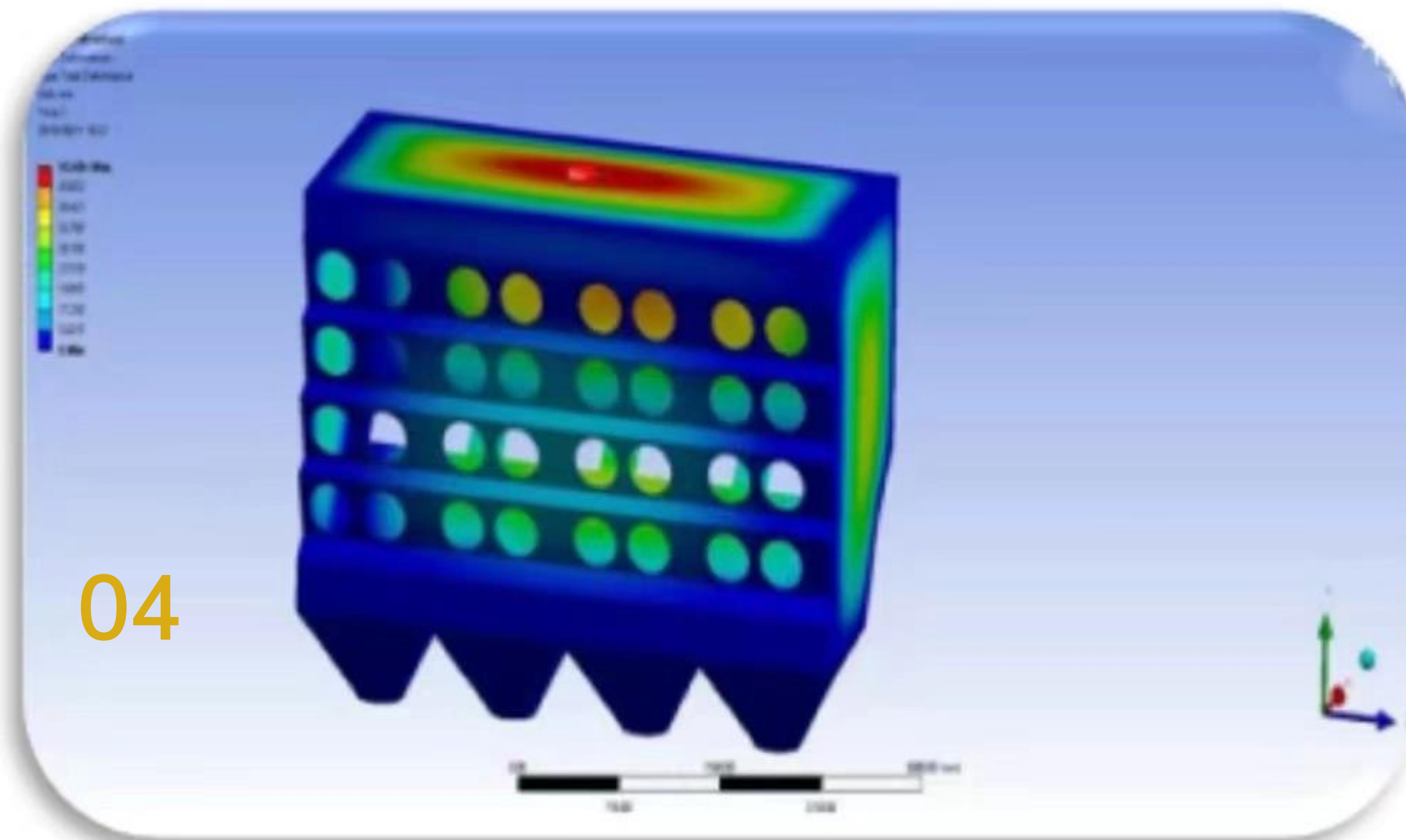


03

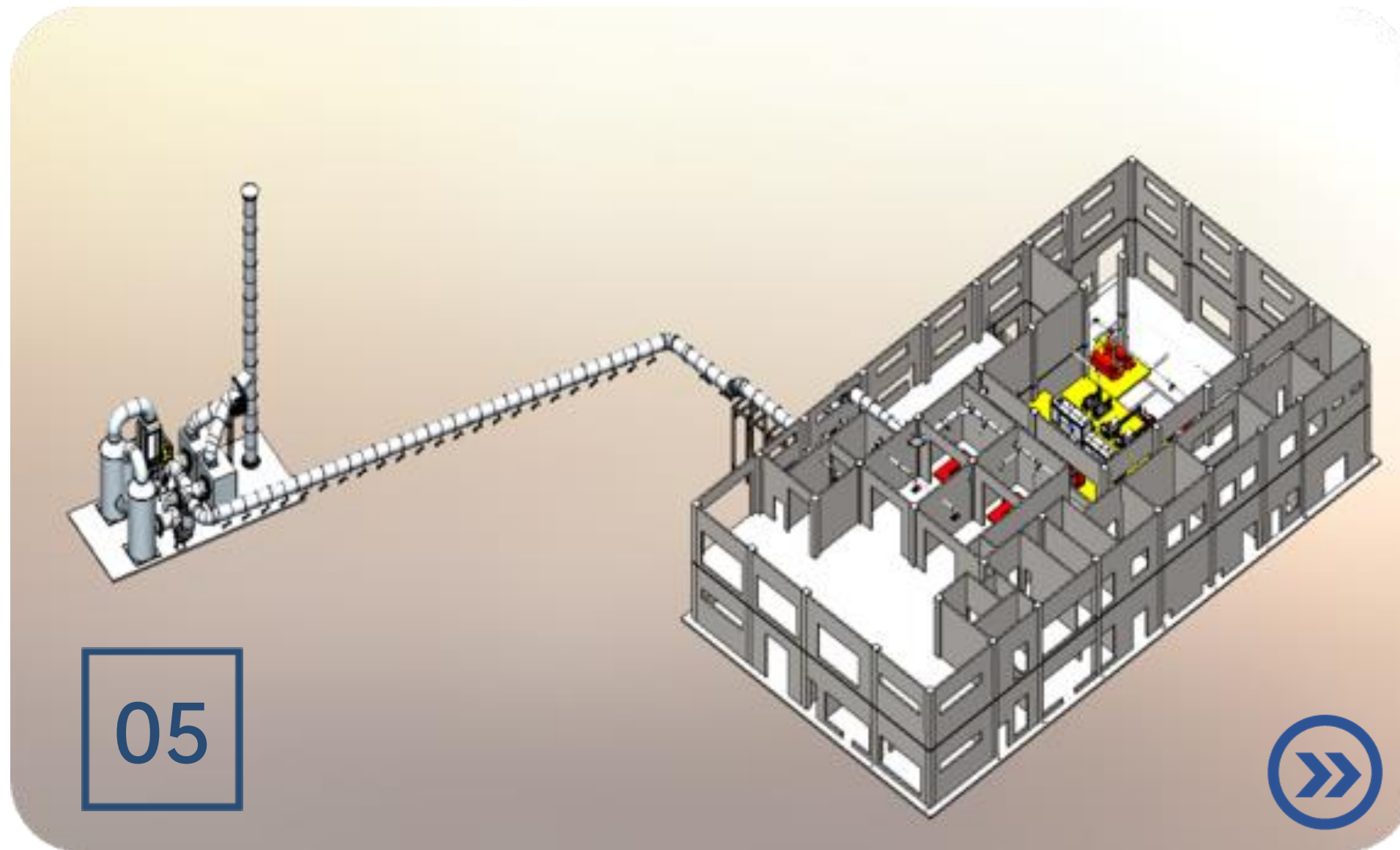
04

Shell & Body Strength Analysis

By conducting strength simulation analysis of the equipment casing, ensuring accurate and comprehensive work in material selection, shell thickness design, etc. During normal operation of the equipment, it is safe and reliable, preventing occurrences of rupture, deformation, etc.



04



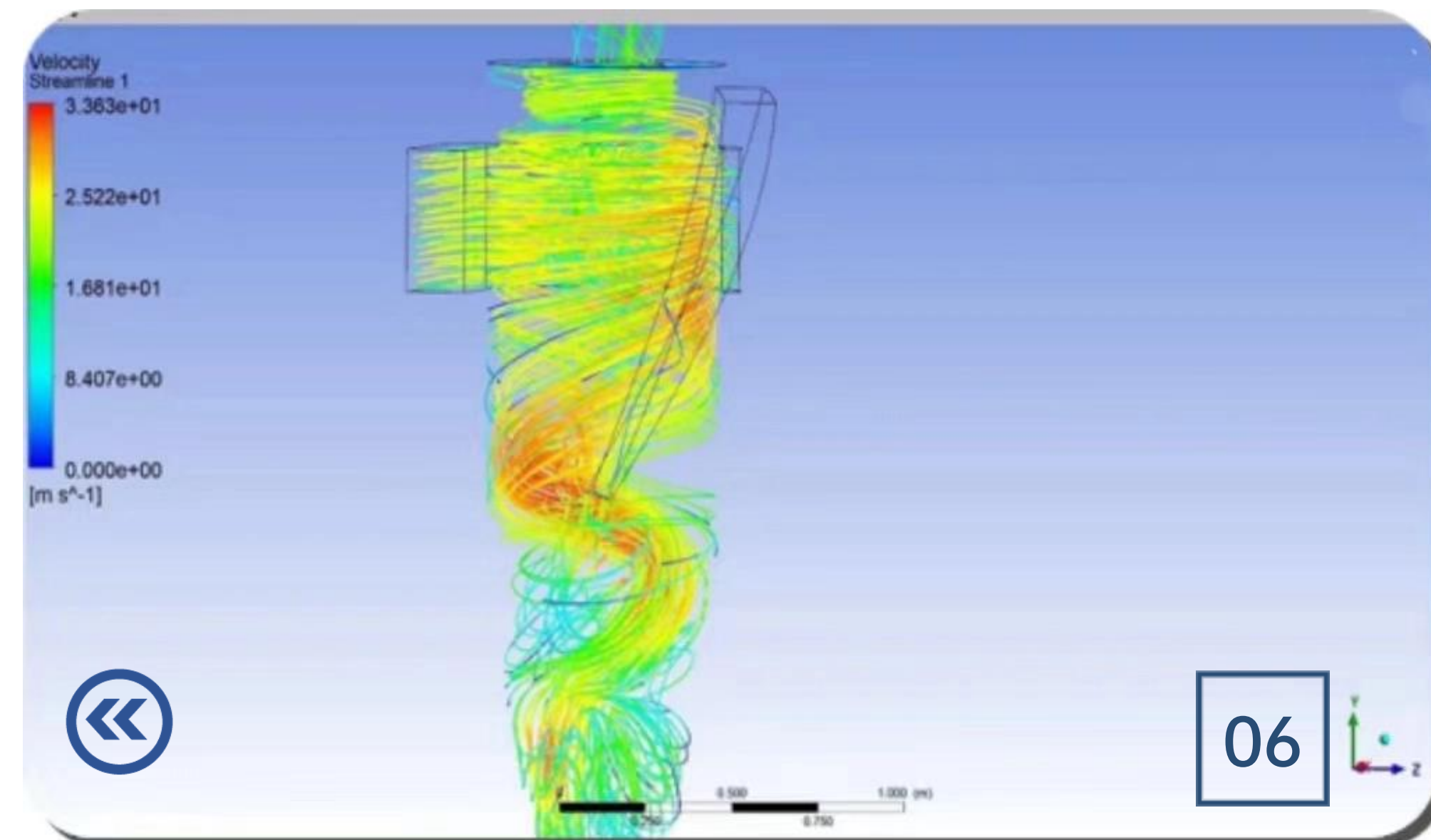
Comprehensive 3D Design

For large environmental systems, **conduct comprehensive 3D modeling, fully three-dimensional design, providing a 'what you see is what you get' experience.** This allows clients to have an intuitive and visual understanding of the system to be constructed. Simultaneously, **3D interference checks can improve design accuracy and rationality, effectively avoiding conflicts and rework during the execution phase.**

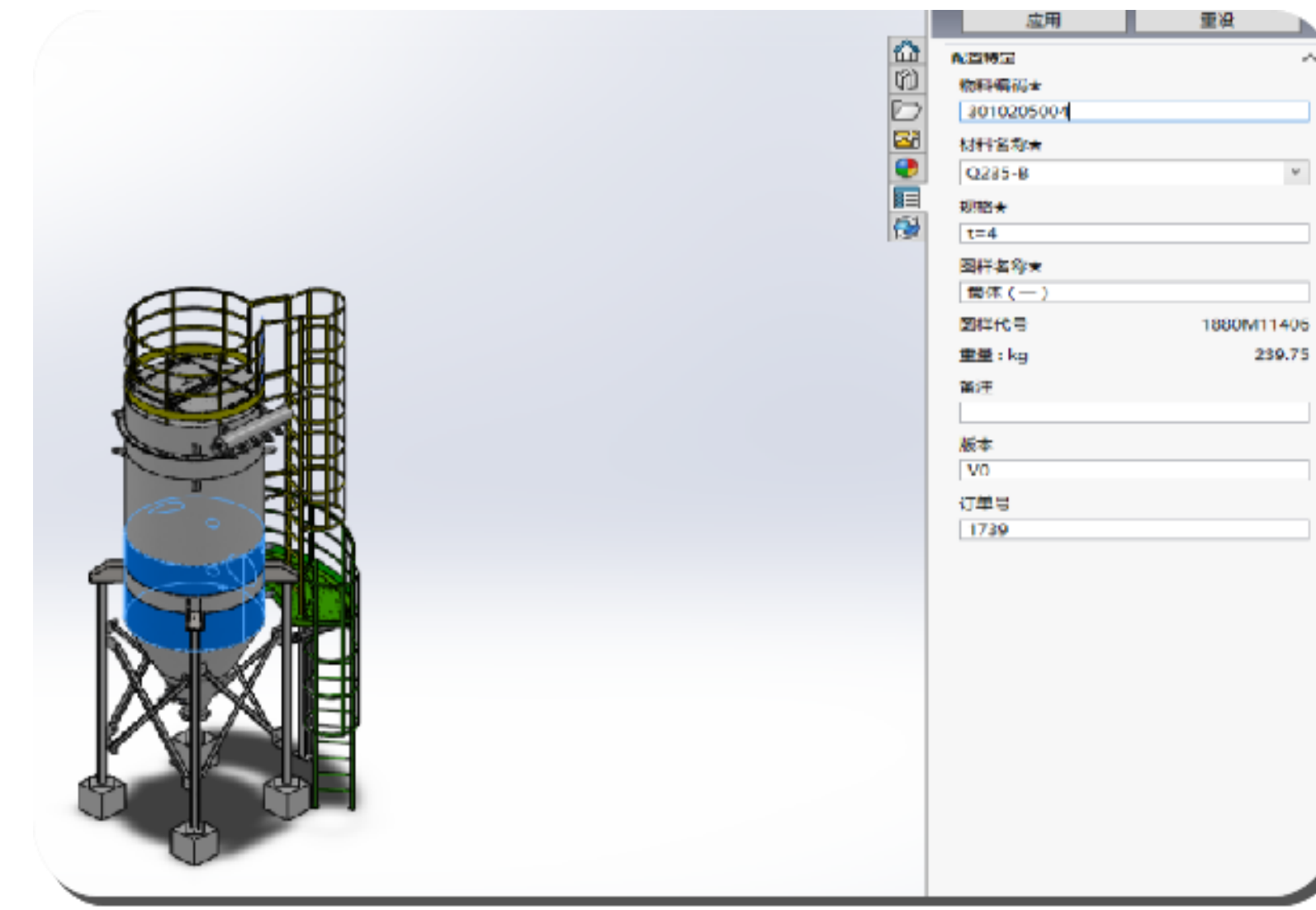
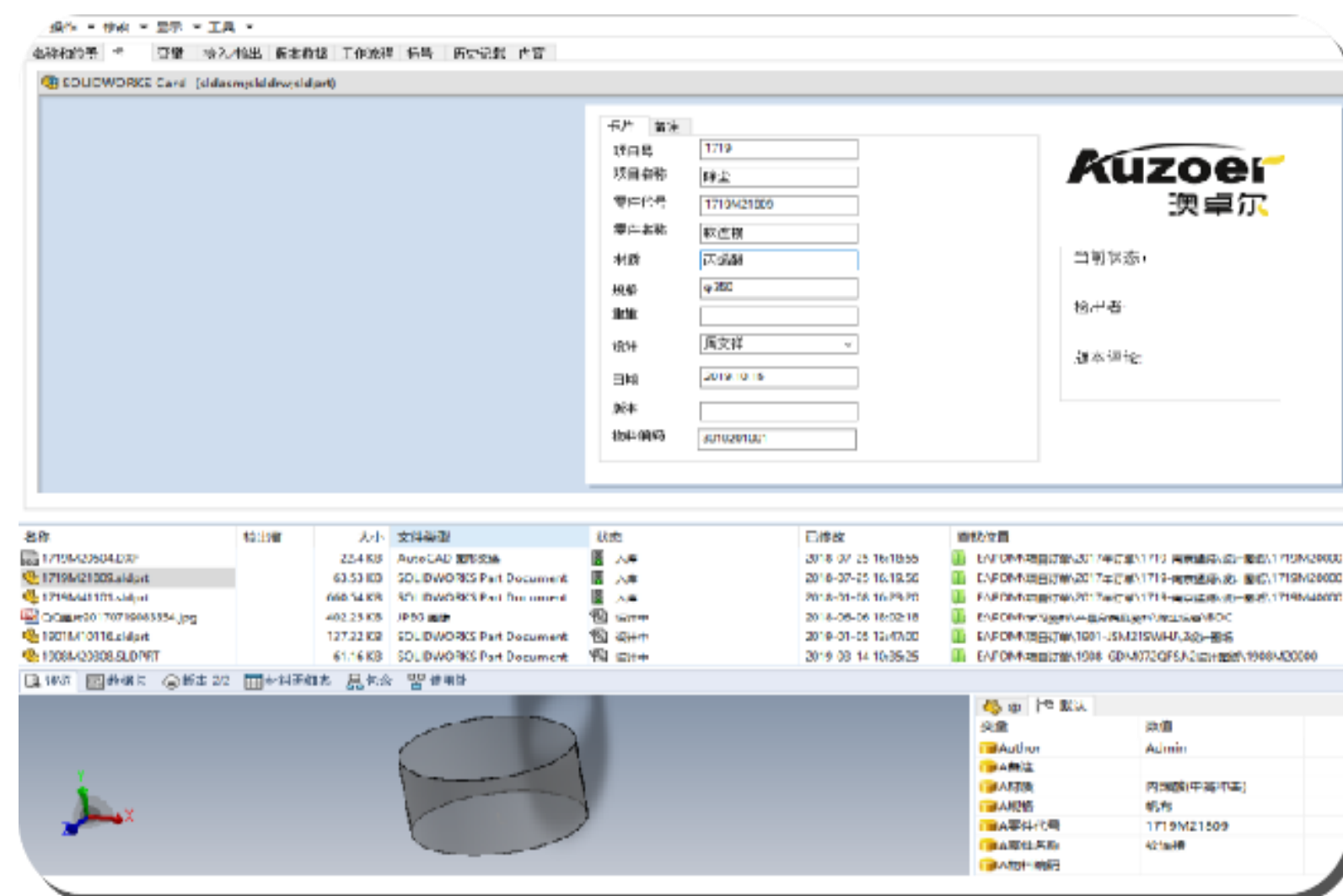
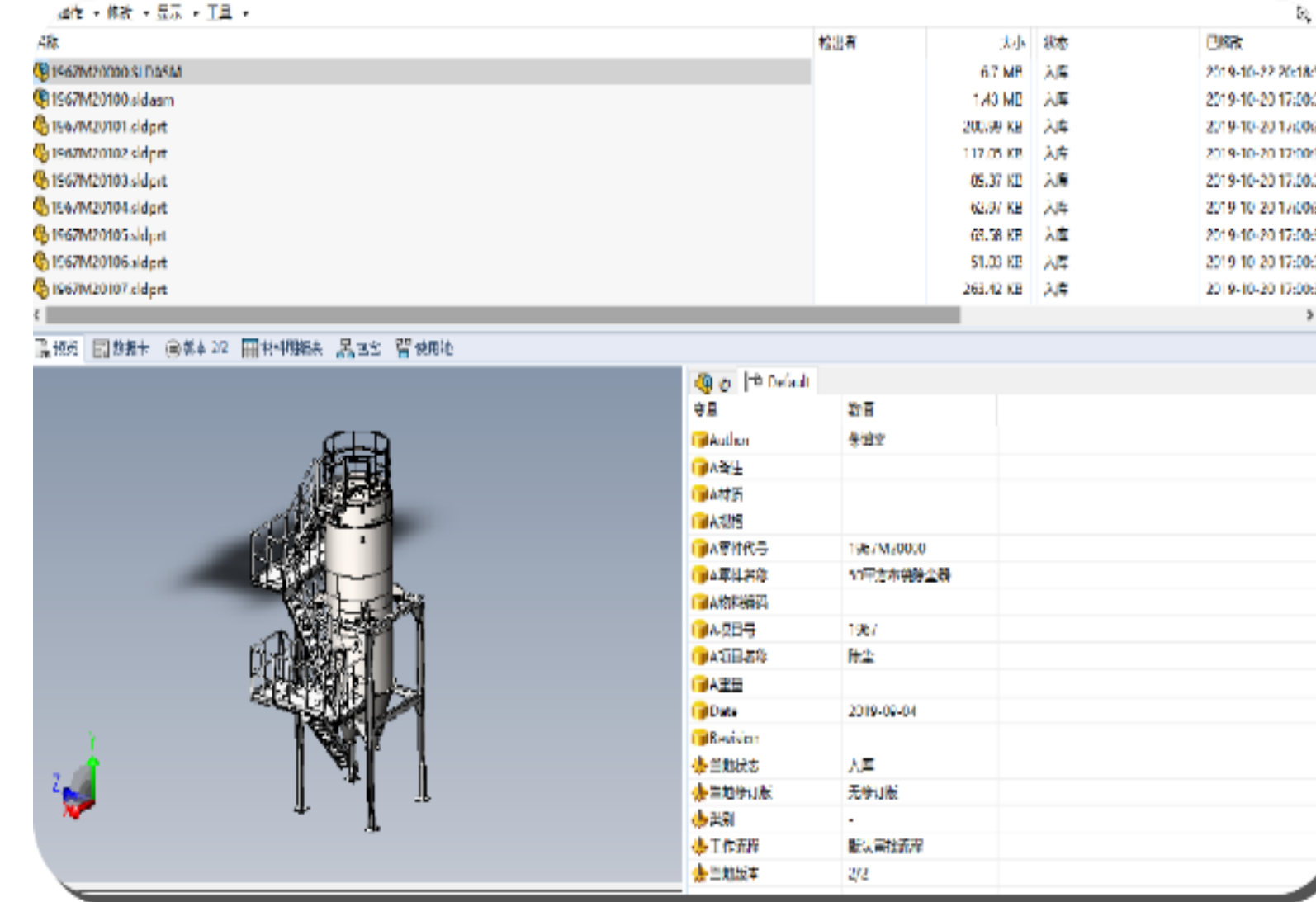
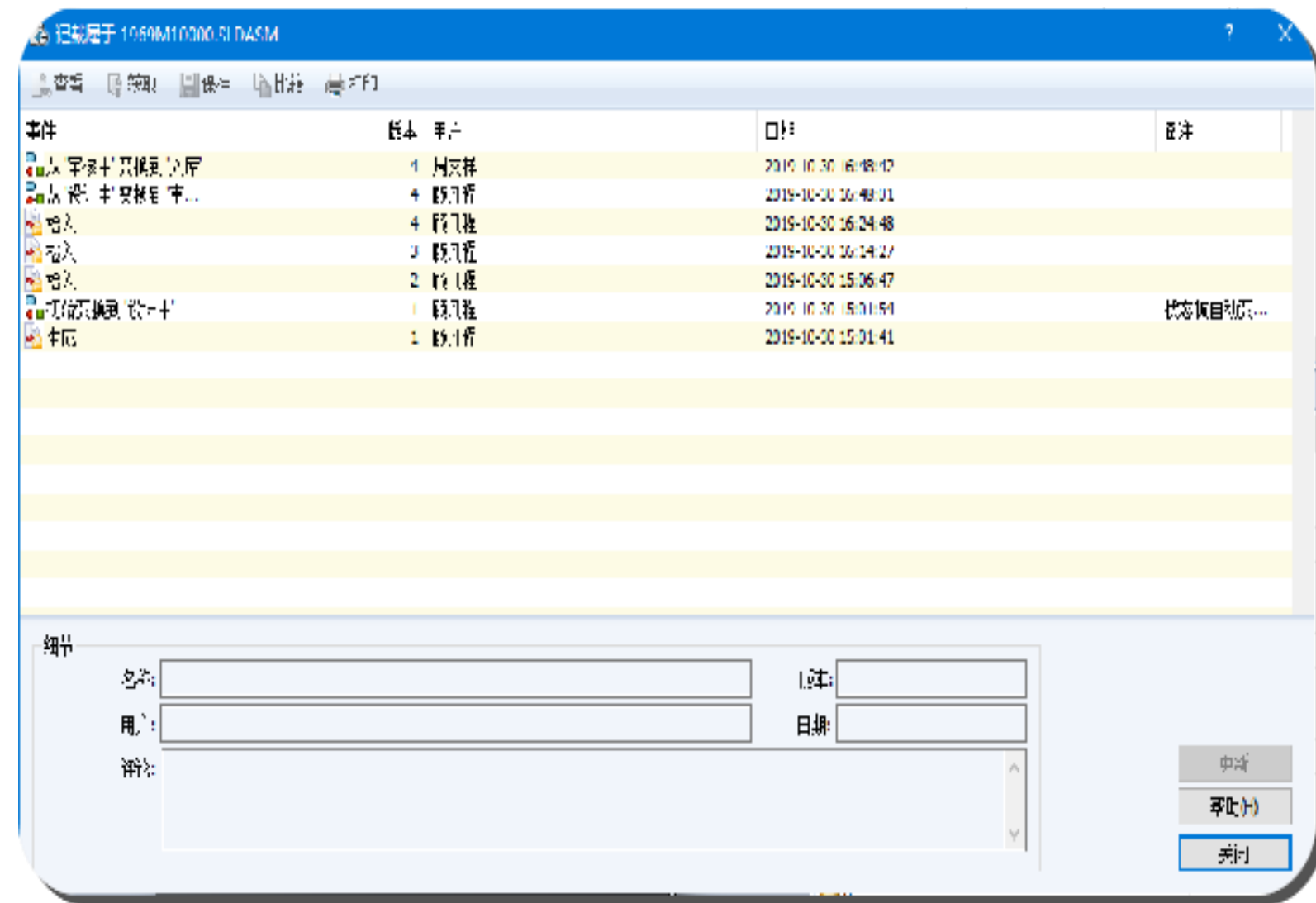
06

Optimization of Airflow Simulation Inside the Equipment

Through Computational Fluid Dynamics (CFD) simulation and optimization calculations, achieve uniform **distribution of airflow in the reaction equipment, fully and effectively utilize the reactor volume, enhance equipment performance, reduce energy consumption, and increase reliability.**



Information Management





One-Stop Service



Expertise in Environmental Engineering



**Experience
Environmental
Science and
Technology
Services**



**Knowledgeable
Details
Engineering
Design**



**High Quality
Manufacturing**



**Good
Workmanship
Installation**



**Safety Startup
&
Commissioning**

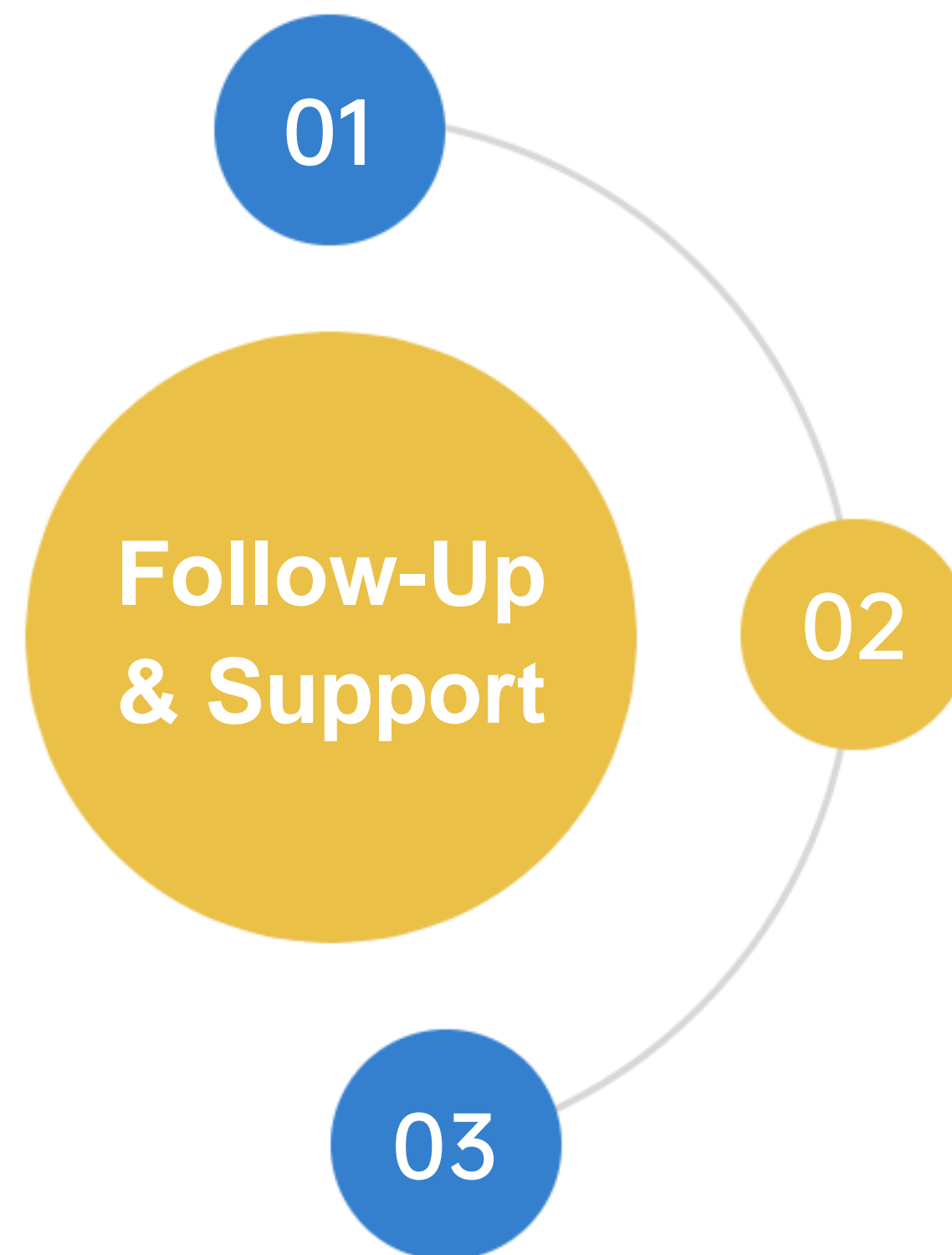


**Supportive
Aftermarket

Operation &
Maintenance**



Aftermarket Services



Aftermarket Service Assurance

As a system integrator, we not only provide customers with superior products but also ensure comprehensive aftermarket service.

Spare Parts

The availability of spare parts always in stock to ensure performance and compliance helping you minimize downtime.

Online Support

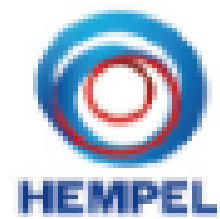
For the operation and maintenance of the system, **we offer 24-hour prompt online communication for technical support.**



Our Clients



AUSSE合作客戶





Contact Us



01

**State-of-art RTO
Equipment Manufacturer**

SMART 3-Canister



02

**Organic Waste Gas
Treatment System Integrator**

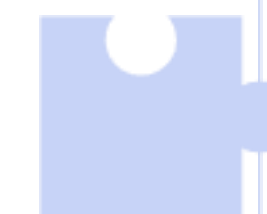
Beneficial for Modern Industrial
Manufacturing



03

**Solutions Provider For
Environmental System**

Expert team of Engineers to Answer
Your Questions



Telephone:

+86 181-1811-6977



Email:

info@ssecn.com



Website:

www.ssecn.com



Address:

Suzhou City, Jiangsu Province
China

